



Oasis® 2600 Patio Shade Installation Instructions



Scan for electronic version

Contents

- [1.0 Overview](#)2
- 1.1 Tools.....2
- [2.0 Bracket Mounting](#).....2
- [3.0 Shade Installation](#).....2
- 3.1 Chain Guide Tension Device Installation.....3
- 3.2 Shade Removal.....3
- [4.0 Bungee Cord System Installation](#).....3
- 4.1 Hembar D-Ring Install3
- 4.2 Surface D-Ring Install4
- [5.0 Fabric Telescope Adjustment](#).....4
- [6.0 Shade Operation](#)4



Oasis® 2600 Patio Shade Installation Instructions

1.0 Overview

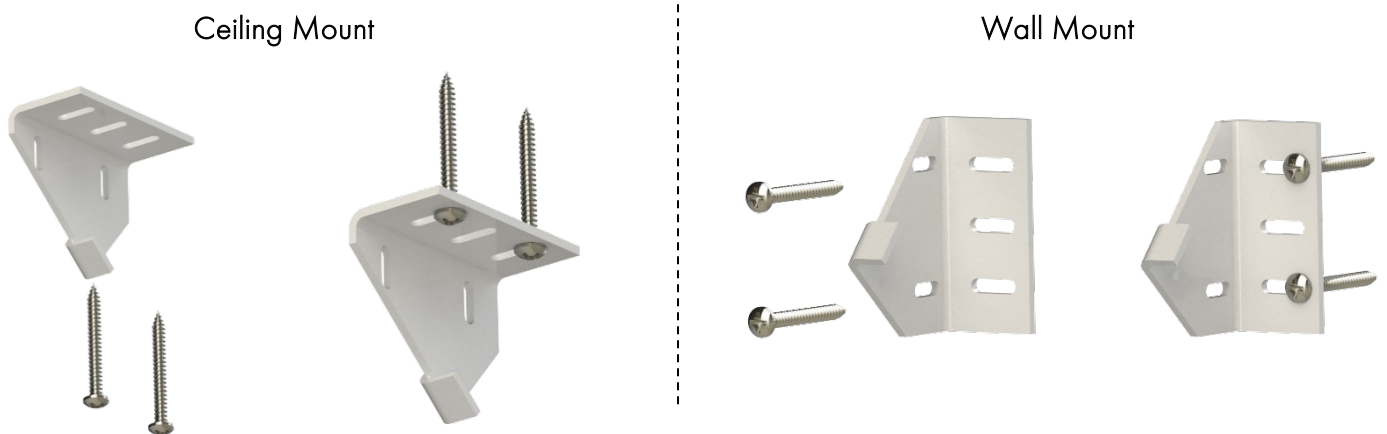
The following installation instructions are for Insolroll's Oasis® 2600 patio shades. This product is only offered with exposed brackets, manual clutch operators, and a bungee cord hold down system. Bungee hardware is included, but mounting screws are not provided. The type and size of screw required are project specific and will vary depending upon the mounting surface.

1.1 Tools

Screw/drill gun with Phillips-head bit extender; hex head driver; standard and Phillips-head screwdriver; level; tape measure; appropriate fasteners for your specific application.

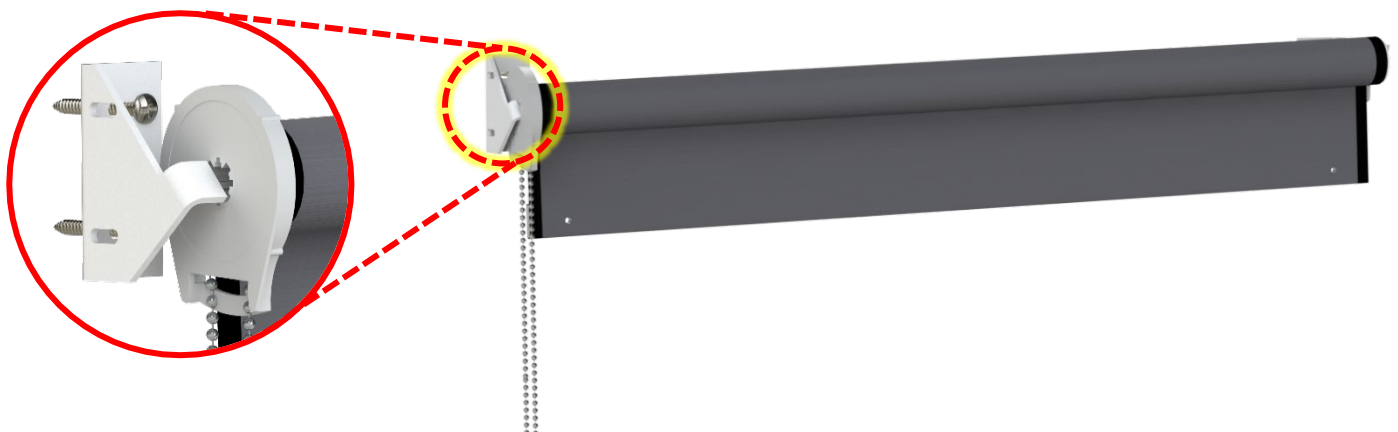
2.0 Bracket Mounting

Mount the operator and idler brackets in the desired location. The universal brackets can be oriented for ceiling and wall mount applications. Use a level to ensure the brackets are mounted perfectly level and use a tape measure to confirm the brackets are mounted to the order width.



3.0 Shade Installation

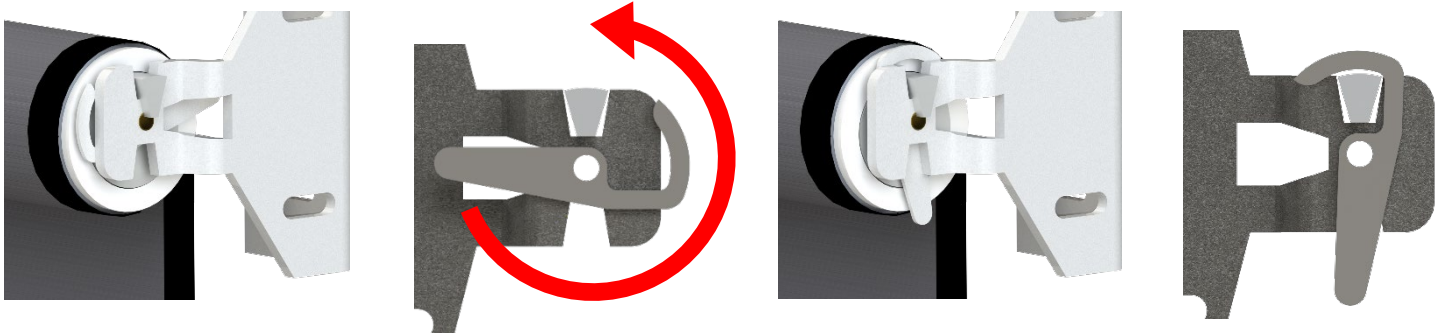
Install the shade by carefully inserting the clutch into the clutch bracket first.





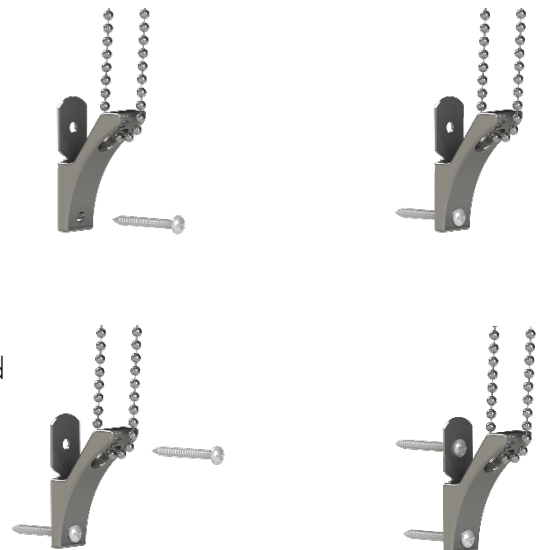
Oasis® 2600 Patio Shade Installation Instructions

Place the lug idler in the idler bracket and rotate the hook to lock the idler in place.



3.1 Chain Guide Tension Device Installation

The chain guide tension device reduces the hazard of strangulation and entanglement of young children by limiting access to the bead chain. The chain guide is shipped on the bead chain. Squeeze the spring mechanism on the chain guide to allow it to open and slide down to the bottom of the chain. Install the bottom screw first. If you install the top screw first, the installation of the bottom screw may pull the chain too tight to run the shade up and down. #8 x 1 1/2" pan head screws for wood trim, drywall or aluminum mullion are provided. If you are not installing into any of these surfaces, replace the provided screws with the appropriate fasteners for your application.



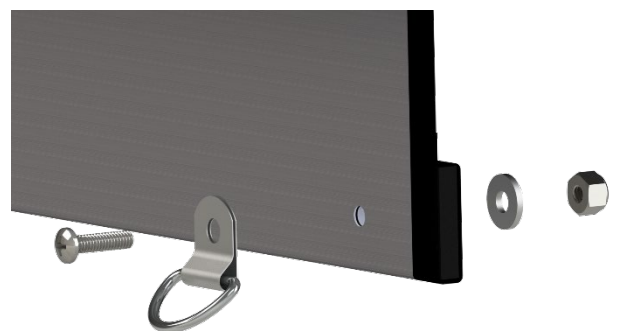
3.2 Shade Removal

To remove the shade, reverse the above installation instructions. Begin by, rotating the idler hook to unlock the idler. Lift up on the idler side of the shade and move the shade away from the clutch bracket.

4.0 Bungee Cord System Installation

4.1 Hembar D-Ring Install

Shades are shipped with pre-drilled holes in the hem bar, two bungee cords and four D-rings. It is strongly advised that you do not add any additional bungee cords to your shade, doing so will void the product warranty. Locate the bungee cord hardware package and install the one D-ring on each of the pre-drilled holes. The D-ring should be installed on the front of the panel while the nut and washer should be located on the back of the panel.





Oasis® 2600 Patio Shade Installation Instructions

4.2 Surface D-Ring Install

Install the remaining two D-rings to the desired surface towards the bottom of the shade. The determined location should be close enough to the shade (at its lowest position) that the provided bungee can be hooked on the surface D-ring and the hem bar D-ring. When installed, the bungee should be taut enough to hold the bottom of the shade in place. Two #8 x 1 1/2" pan head screws for wood trim, drywall or aluminum mullion are provided. If you are not installing in any of these materials, replace the screws with the proper fastener for your application.



5.0 Fabric Telescope Adjustment

Fabric telescoping is excessive horizontal movement of fabric while shade rolls up on the tube. Shades are tested and fabric telescoping is adjusted prior to shipment, but additional adjustments may be required depending on each specific application.

If fabric adjustments are required, roll the shade all the way down so the tube is exposed.

Place a piece of duct tape, 2"-4" in length, near the edge of the tube on the side opposite of the direction the fabric is moving.

Run the shade up and down a few times. If the shade still telescopes, repeat the process. The correct amount of tape can only be determined by trial and error. Re-set the lower limit after completing shade adjustments.

6.0 Shade Operation

To set the lower limit, start by rolling the shade down to its preferred down limit. Place the ball stop (provided) on the chain so it prevents the shade from rolling down any further.

Roll the shade to the desired upper limit. Place the ball stop (provided) on the chain so it prevents the shade from rolling up any further.