



Insolroll Decorative Clutch Shade Installation Instructions

Contents

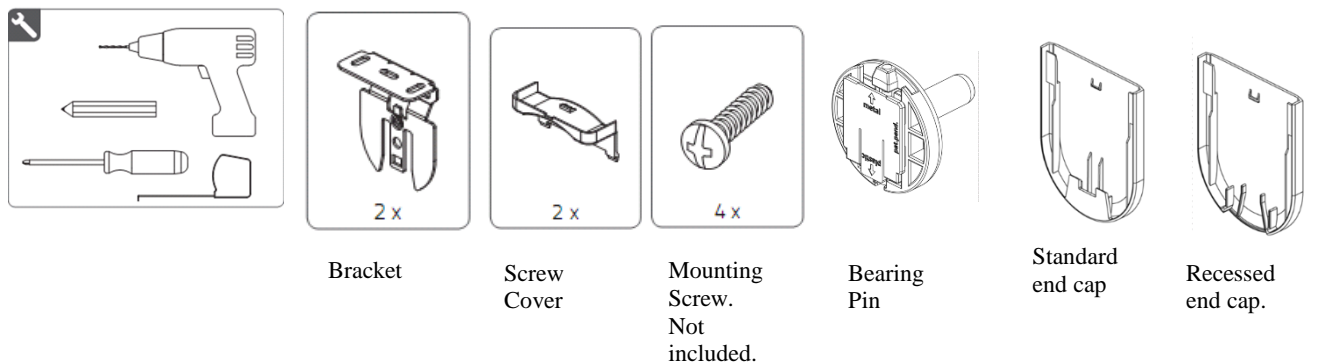
1.0 Tools and Parts.....	2
1.1 Determine Mounting Position and Mount Brackets	2
1.2 Install Shade.....	3
1.3 Install Chain Guide	4
1.4 Test Shade Operation.....	4
1.5 Shade Removal	4
2.0 Safety Warning	4
Addendum A.....	5
Installation Instructions for Insolroll® Metal Select Chain Guide	5
Addendum A.....	6
Installation Instructions for Insolroll® Universal Chain Guide.....	6



Insolroll Decorative Clutch Shade Installation Instructions

This document provides installation instructions for clutch controlled shades. **Mounting screws are not provided.** The type and size of screw required will vary depending upon the mounting surface.

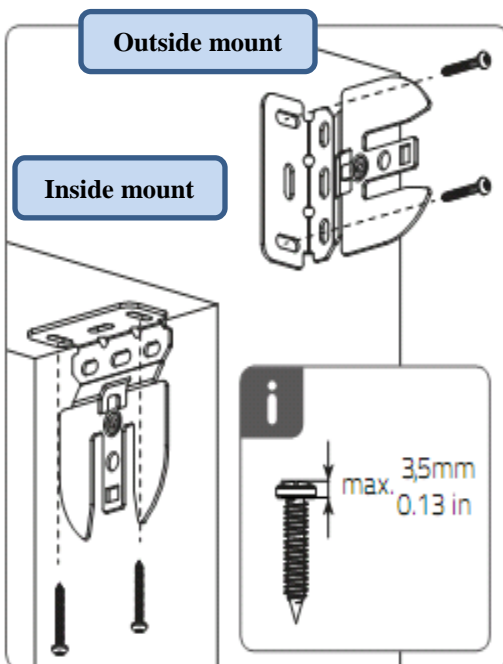
1.0 Tools and Parts



1.1 Determine Mounting Position and Mount Brackets

The universal mounting brackets accommodate surface or ceiling mount applications.

Deduct 1 3/16 inches from opening width for screw positions.



There are two types of end caps, standard and recessed. The recessed end cap is used on the clutch bracket for easy removal in an inside mount application and the standard end cap is used on the idler bracket for inside mount application or on both the clutch and idler bracket for outside mount application.

Inside mount – use the recessed end cap on the clutch bracket and use the standard end cap on the idler bracket. **First, slide the end caps on the brackets.** Next, determine bracket location, and then secure the brackets into the mounting surface using customer-supplied screws.

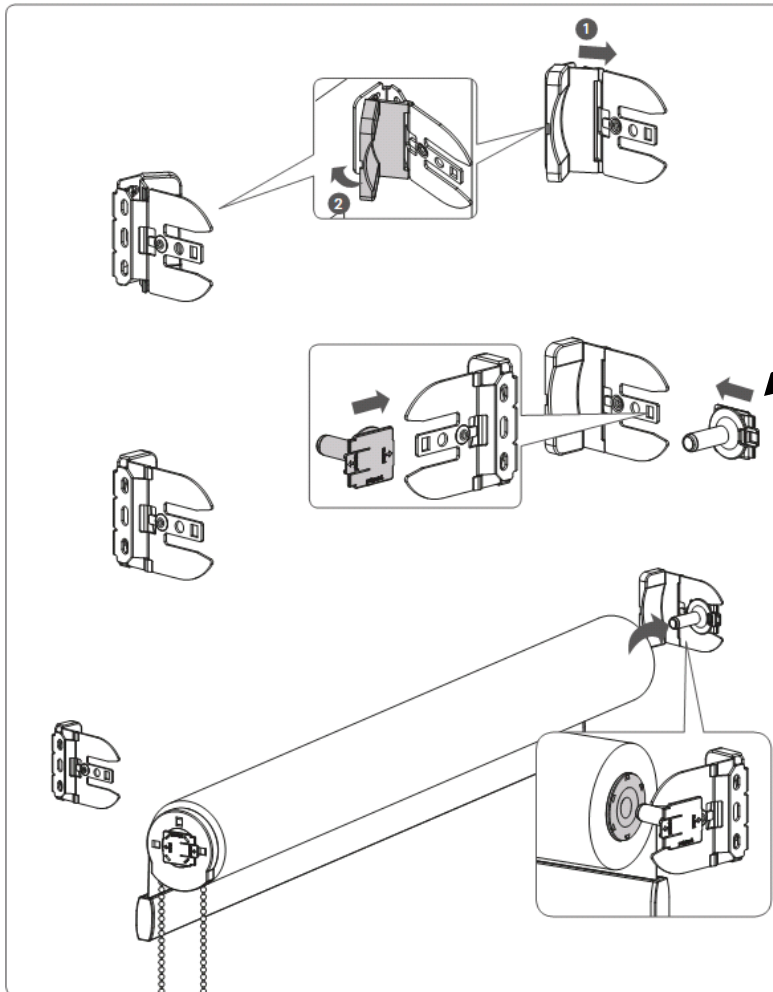
Outside mount – use two standard end caps. Locate the brackets, then secure the brackets into the mounting surface using customer-supplied screws. The standard end caps slide onto the brackets after completing shade installation.

Note that the use of two end caps adds a total of 1/8 inch to the bracket-to-bracket measurements.



Insolroll Decorative Clutch Shade Installation Instructions

1.2 Install Shade



Outside mount application is shown.

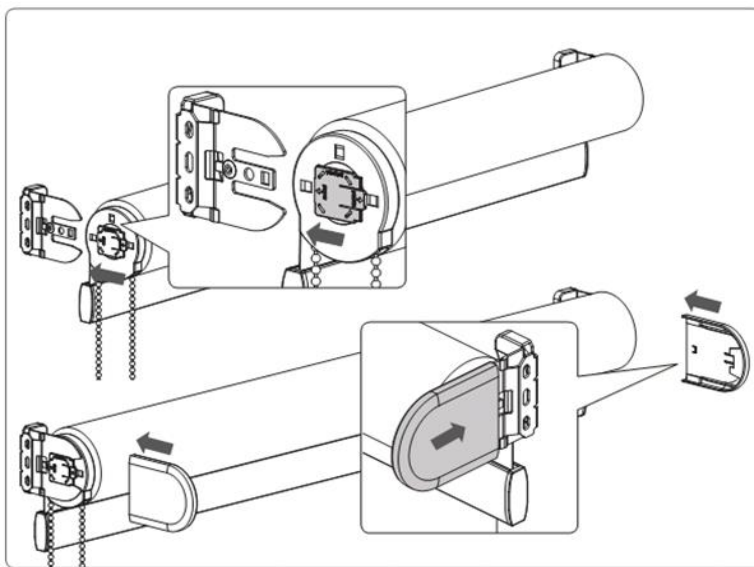
Install screw cover.

The bearing pin tab has the word 'Plastic' on one end and the word 'Metal' on the other end.

Orient the bearing pin tab so the word 'Metal' is inserted toward the bracket and the word 'Plastic' is opposite the bracket.

Slide the bearing pin onto the idler bracket.

Insert the idler onto the bearing pin then slide the clutch into the bracket.



The clutch tab has the word 'Plastic' on one end and the word 'Metal' on the other end.

Orient the clutch tab so the word 'Metal' is inserted toward the bracket and the word 'Plastic' is opposite the bracket.

Slide the clutch into the clutch bracket.

Slide the standard end cap on each bracket.



Insolroll Decorative Clutch Shade Installation Instructions

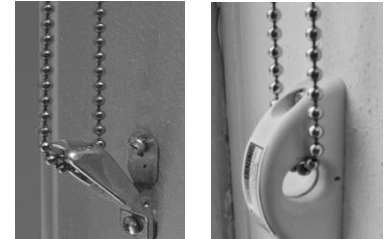
1.3 Install Chain Guide

Install the chain guide tension device.

The Tension Device reduces the hazards of strangulation and entanglement of young children by limiting access to the bead chain.

Follow Chain Guide Installation Instructions (Addendum A) for each specific chain guide.

Mount the Tension Device that is attached to the bead chain, to the window frame or wall, so that young children cannot pull the chain around their necks. Position the Tension Device on the window frame or the wall so the Tension Device and bead chain do not interfere with raising or lowering the shade.



Metal Select Universal
Chain Guide Tension Devices

Shade operation.

For regular roll shades, where the fabric rolls back toward the window, pull down on the rear chain to lower the shade.

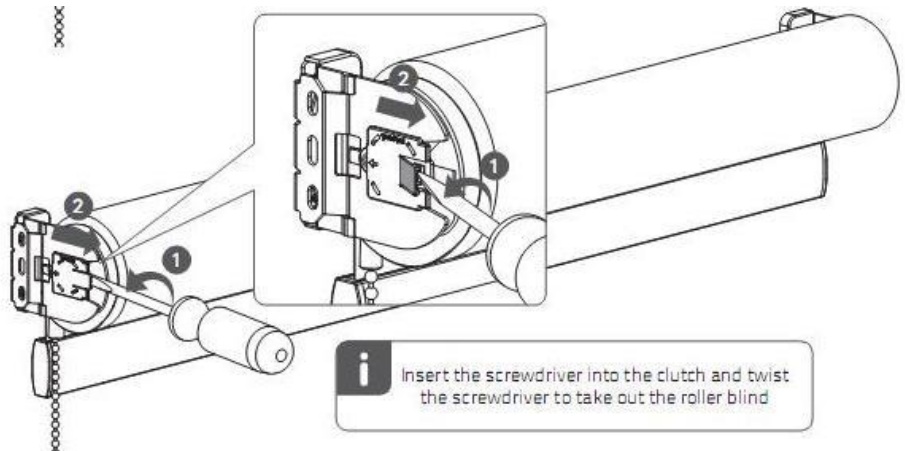
For reverse roll shades, where the fabric rolls toward the room, pull down on front chain to lower shade. Pull on opposite chain to raise the shade.

1.4 Test Shade Operation

Run shade up & down several times to ensure that proper tension and stops have been set.

1.5 Shade Removal

Remove the end caps, insert a screwdriver into the clutch tab, twist the screwdriver, and slide the shade out of the bracket.



2.0 Safety Warning

Young children can wrap cords around their necks and STRANGLE.

- Make sure that tasseled pull cords are as short as possible.
- Keep all window cords well out of the reach of children.
- Move all cribs, beds, furniture, and toys away from windows and window cords, preferably to another wall.

**WARNING**



Window Blind Cord Can STRANGLE Your Child

- Children can climb furniture to reach cords.
- Move crib and furniture away.
- Keep all cords out of children's reach.
- Attach tension device to wall or floor.
- Fasteners provided with the tension device may not be appropriate for all mounting surfaces.
- Use appropriate anchors for the mounting surface conditions.

**ADVERTENCIA**



La cuerda ciega de la ventana puede ESTRANGULAR su niño

- Los niños pueden subir los muebles para alcanzar las cuerdas.
- Mueva la cuna y los muebles.
- Mantenga todas las cuerdas fuera del alcance de los niños.
- Conecte el dispositivo de tensión a la pared o al suelo.
- Los sujetadores provistos con el dispositivo de tensión pueden no ser apropiados para todas las superficies de montaje.
- Utilice anclajes apropiados para las condiciones de la superficie de montaje.

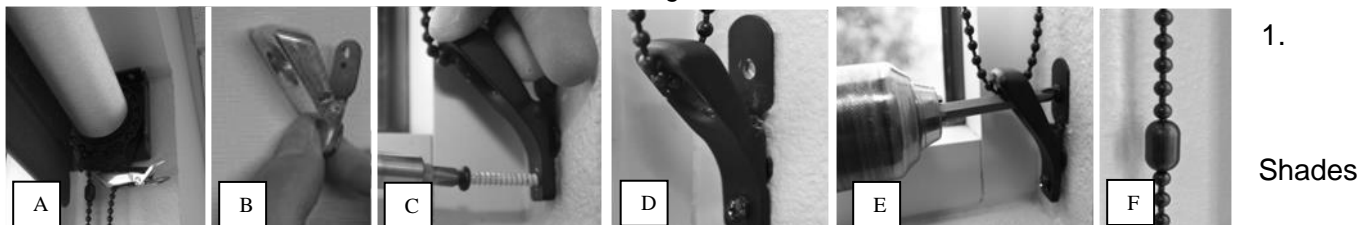


Insolroll Decorative Clutch Shade Installation Instructions

Addendum A

Installation Instructions for Insolroll® Metal Select Chain Guide

Metal Select Chain Guide is a chain tension device designed for inside or outside mounts.



1.

Shades

come with chain guide attached to shade in a manner that installer must release and install this chain tension device for the shade to be fully operational. (Fig. A)

2. After mounting shade in brackets, squeeze on flanges furthest from the chain to open, this releases tension on chain guide to slide it down to the bottom of the chain loop. (Fig. B)

3. Open the chain guide prior to screwing to wall or window frame by squeezing flanges open or using your finger to hold open while attaching bottom screw first. (Fig. B, C, D) If chain guide is not opened before attaching to wall, or top screw attached first, chain will over-tighten and may make shade operation rough. #8 self-tapping mounting screws (provided) are designed for installation in wood trim, drywall, or aluminum mullion. Typical mounting conditions below.

4. Operate shade after bottom screw is attached to ensure smooth operation. Use a 3 1/2" bit extender to ensure the bit does not catch on the chain. Attach the top screw through the chain guide opening (Fig. E).

5. Attach chain stops for upper and lower limits of the shade (Fig. F).

Wood Trim or jamb	Drywall with Stud Behind	Drywall with No Stud Behind	Hollow Aluminum Mullion
<p>Screw directly into wood trim or jamb. For hardwood trim, pre-drill a 1/16" hole to avoid splitting trim. For applications with metal stud behind, it may be necessary to pre-drill depending upon gauge of stud.</p>	<p>Screw directly into drywall with wood or metal stud behind it. For applications with metal stud behind, it may be necessary to pre-drill depending upon gauge of stud.</p>	<p>Place chain guide at desired location. Mark location for screw anchors. Remove chain guide. Punch hole in drywall and attach anchor to drywall. Screw self-drilling anchor into drywall (Nylon Zip-It wallboard anchor or equal). Place Metal Select chain guide back into position and mount chain guide with screws into drywall anchors. (Drywall anchor NOT SUPPLIED.)</p>	<p>Place chain at desired location. Mark location for screws and pre-drill a 1/16" hole. Move chain guide back into position and screw into window mullion.</p>

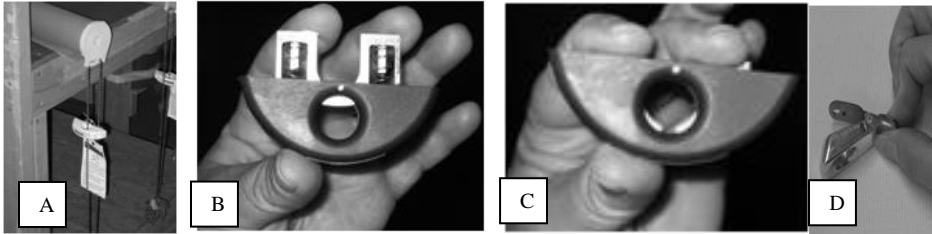


Insolroll Decorative Clutch Shade Installation Instructions

Addendum A

Installation Instructions for Insolroll® Universal Chain Guide

Universal Chain Guide is a chain tension device designed for inside or outside mounts.



1. Shades come with chain guide attached to shade in a manner that installer must release and install this chain tension device for the shade to be fully operational. (Fig. A)
2. After mounting shade in brackets, squeeze spring/tension mechanism to open (Fig. B,C). This releases tension on chain guide to slide it down to the bottom of the chain loop. #8 self-tapping mounting screws (provided) are designed for installation in wood trim, drywall, or aluminum mullion. Typical mounting conditions below.
3. Push the chain guide against wall to desired position prior to screwing to wall or window frame.
4. Install both screws; spring mechanism will be pushed into the Universal Chain Guide as screws are tightened.
5. Attach chain stops for upper and lower limits of the shade (Fig. D).

Wood Trim or Jamb	Drywall with Stud Behind	Drywall with No Stud Behind	Hollow Aluminum
<p>Screw directly into wood trim or jamb. For hardwood trim, pre-drill a 1/16" hole to avoid splitting trim. For applications with metal stud behind, it may be necessary to pre-drill depending upon gauge of stud.</p>	<p>Place chain at desired location, mark location for screws and pre-drill 1/16" hole. Move chain guide back into position and screw into window mullion..</p>	<p>Place chain guide at desired location. Mark location for screw anchors. Remove chain guide. Punch hole in drywall and attach anchor to drywall. Screw self-drilling anchor into drywall (Nylon Zip-It wallboard anchor or equal). Place Universal chain guide back into position and mount chain guide with screws into drywall anchors (Drywall anchor NOT SUPPLIED.)</p>	<p>Place chain at desired location. Mark location for screws and pre-drill a 1/16" hole. Move chain guide back into position and screw into window mullion.</p>