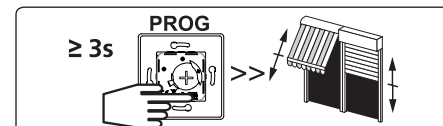


1 Adding the transmitter to an existing installation

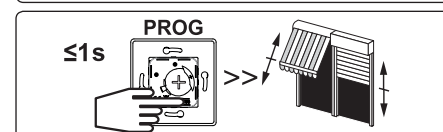
1.1. Open the memory of the motor using its individual control transmitter:

- Press the Prog. Key for about 3 sec. on the motor's individual control transmitter, the motor will jog.



1.2. Then validate the operation from the new transmitter to be programmed:

- Press the Prog. key for about 1 sec. on the new transmitter, the motor will jog.



- For group control from the new transmitter, repeat operations 1.1 and 1.2 for each motor of the group.
- For master control from the new transmitter, repeat operations 1.1 and 1.2 for each motor of the installation.
- To delete a transmitter from the memory of a motor, perform operation 1.1 with a programmed transmitter, then perform operation 1.2 with the transmitter to be deleted.

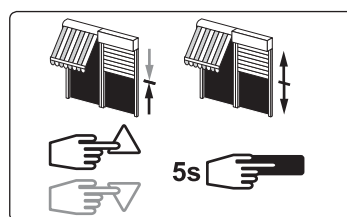
⚠ For more complete information about programming, please refer to the instructions of the motor used.

2 Programming and use Intermediate Position (I.P):

⚠ Refer to Hz motor instructions to make sure it has this feature.

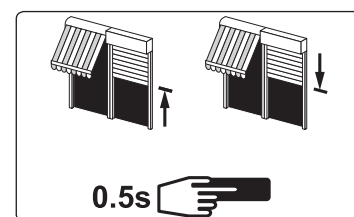
Programming:

- Move the motor to the desired position.
- Press 5 seconds on the **STOP** key. The motor will jog.



Use:

- Press the **STOP** button for 0.5 second. The motor runs to the intermediate position.



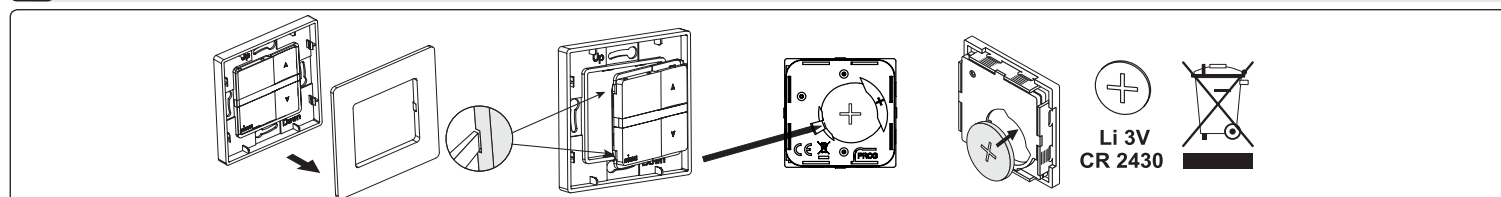
3 Technical data

- Compatible with motors & receivers **SIMU-HZ**

- Wireless switch/class III – Protection Index: IP30
- Radio frequency: 433,42 MHz
- Maximum transmission time: 10 seconds
- Operating temperature: 14°F (-10°C) to 140°F (60°C)
- Storage temperature: -22°F (-30°C) to 158°F (70°C)
- Transmitter range: 6m(20ft) thruout 2 concrete walls in normal RF noise conditions.
- Power: 3V lithium battery typeCR 2430. Lifetime ± 3 years when 4 Activations/day.

- Keep away from children
- Do not position the transmitter near metal in order to ensure its proper operation and prevent reduced range.
- A radio appliance using the same frequency (for example : hi-fi radio headphones) may deteriorate our product's performance.
- Do not immerse the product, avoid splashing of liquids.
- Do not use abrasive products or solvents to clean the product.

4 Replacing of the battery



- Power supply is not required for saving data.
- Programming/memory is not lost when battery is changed (power lost).
- Do not recharge the battery.
- Please separate and dispose of the appliance, batteries and used batteries at a recycling location.

FCC

This device complies with Part 15 of the FCC Rules. Operation is subject to the following conditions

- This device may not cause harmful interference and
- This device must accept any interference received, including interference that may cause undesired operation

Warning! Changes or modifications not expressly approved by the manufacturer could void the users authority to operate the equipment.



USA - 5 Channels Wall Hz Transmitter

Ref 2008776

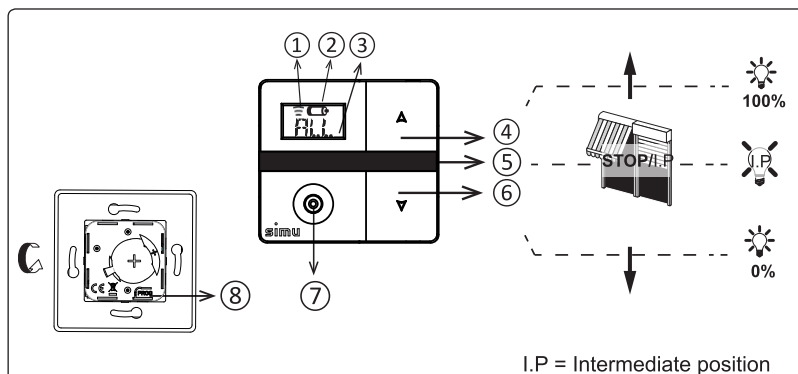
5124418A

Read carefully these instructions before any use.

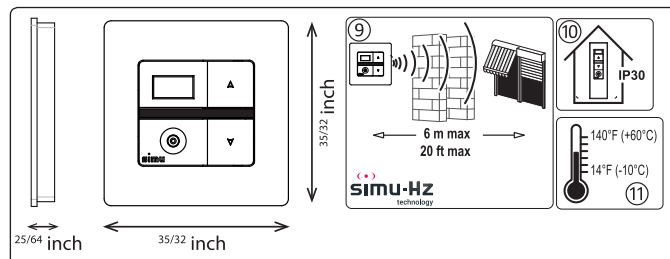
S.A.S. au capital de 5 000 000 € - Z.I. Les Giranaux - BP71 - F70103 Arc-Les-Gray CEDEX - RCS VESOUL B 425 650 090 - SIRET 425 650 090 0011 - n° T.V.A CEE FR 87 425 650 090

1 Description

The five-channel wall Hz transmitter can control up to five motors or groups of motors/receivers of the Simu Hz range. Selecting 'ALL' channels makes it possible to simultaneously control all the channels (1->5). The display screen allows the user to name the different channels with two alphabetic characters in addition to the selected channel number. (e.g. RM1 for Room for channel 1, etc.).



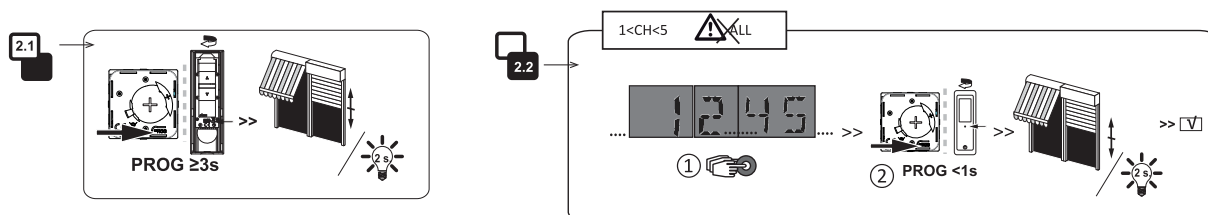
Technical data (Wireless switch/class III):



- ① Transmission indicator
- ② Low battery indicator
- ③ Selected Channel: 1,2,3,4,5, or All (All= Channels simultaneously)
- ④ UP control button ▲
- ⑤ STOP control button ■
- ⑥ DOWN control button ▼
- ⑦ Select button ●
- ⑧ Programming button « PROG »

- ⑨ Transmitter range 20ft (6m) through 2 walls
- ⑩ Protection Index. For indoor use.
- ⑪ Operating temperature: 14°F - to 140°F (-10°C to 60°C)
Storage temperature: -22°F to 158°F (-30°C to 70°C)
- Frequency: 433.420 MHz

2 Adding the transmitter to an existing installation



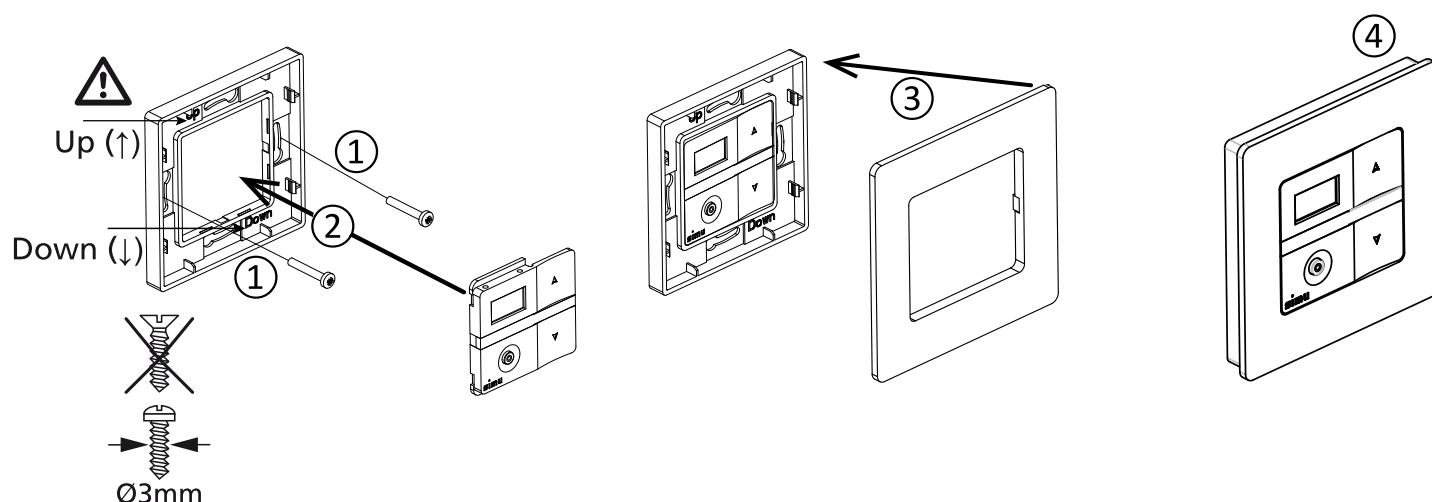
2.1- Press the PROG button (>3 s) on the current individual control transmitter for about 3 seconds. The motor will jog.

2.2- 1. Select the channel (●) on the transmitter you wish to add.
2. Press the PROG button for less than 1 second. The motor will jog. The operation is completed.

- For a group control on a channel (1-5): repeat operations 2.1 and 2.2 for each motor in the group.

- **Do not program the ALL channel to motors/receivers!** The ALL channel automatically controls all motors programmed to chs 1-5. (For more complete information about programming, please refer to the instructions of the motors or receivers used).

3 Installation



- ⚠ -Keep out of children's reach. Do not position the transmitter near metal in order to ensure its proper operation and prevent reduced range.
- A radio appliance using the same frequency (for example: hi-fi radio headphones) may deteriorate our product's performance.

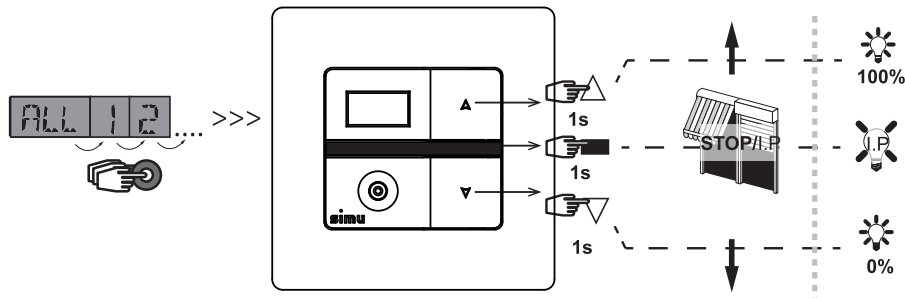
4 Using the transmitter

When the screen is OFF, pressing on the channel select button ● will turn ON the screen for 2 min.

4.1. Manual control:

- 1 - Select a channel with the Select button (●),
- 2 - Then press a control button (▲/▼/or ■).

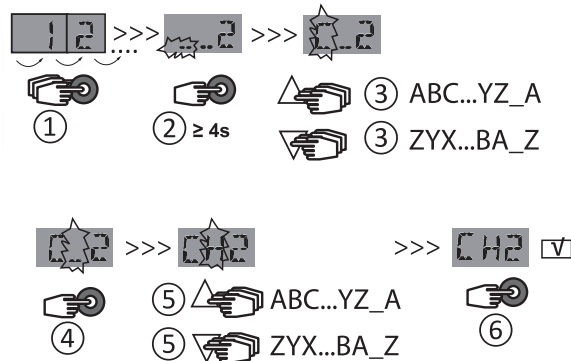
I.P: Intermediate Position



4.2. Naming a channel:

⚠ Channels 1-5

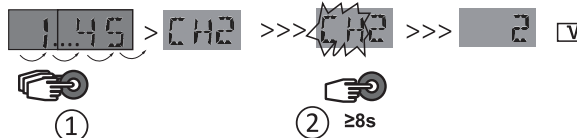
- 1- Select the channel to name with the channel select button (●). (1, 2, 3, 4 or 5).
- 2- Press the select button (●) for more than 3 seconds; the first character to edit will flash for 15 seconds.
- 3- Using the control keys (▲/▼), select the desired character.
- 4- Press the selection key (●) briefly to save the displayed character; the second character will start to flash.
- 5- Using the control keys (▲/▼), select the desired character.
- 6- To save and exit naming, press the select button (●) briefly.



4.3. Deleting a saved channel name:

⚠ Channels 1-5

- 1- Using the channel select button (●), select the channel (1, 2, 3, 4, or 5), for which you want to delete the name.
- 2- Press the channel select button (●) for more than 8 seconds; both characters will flash and then be erased.

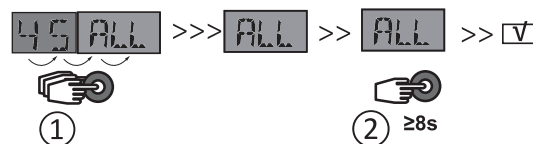


4.4. Deleting the saved names of all 5 channels:

⚠ ALL

- 1- Using the Ch select button (●), select the channel 'ALL'.
- 2- Press the Ch select button (●) for more than 8 seconds.

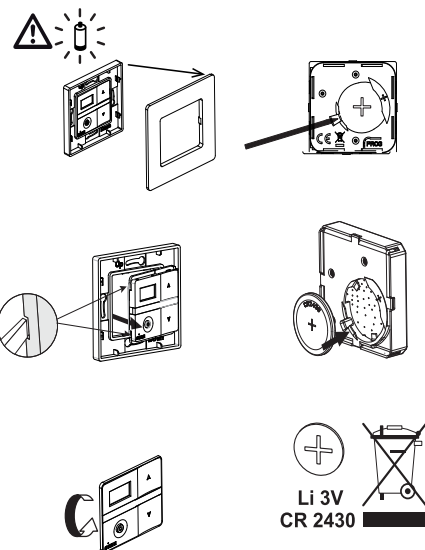
All 5 channel names are deleted.



5 Replacing the battery

Replace the batteries when the low battery indicator ② goes on.

Power: 3V lithium battery type CR 2430- battery life: 3 years at 4 presses/day. Do not recharge the battery. Please separate and dispose of the appliance, batteries and used batteries at a recycling location.



FCC

This device complies with Part 15 of the FCC Rules. Operation is subject to the following conditions

- This device may not cause harmful interference and

- This device must accept any interference received, including interference that may cause undesired operation

Warning! Changes or modifications not expressly approved by the manufacturer could void the users authority to operate the equipment.