

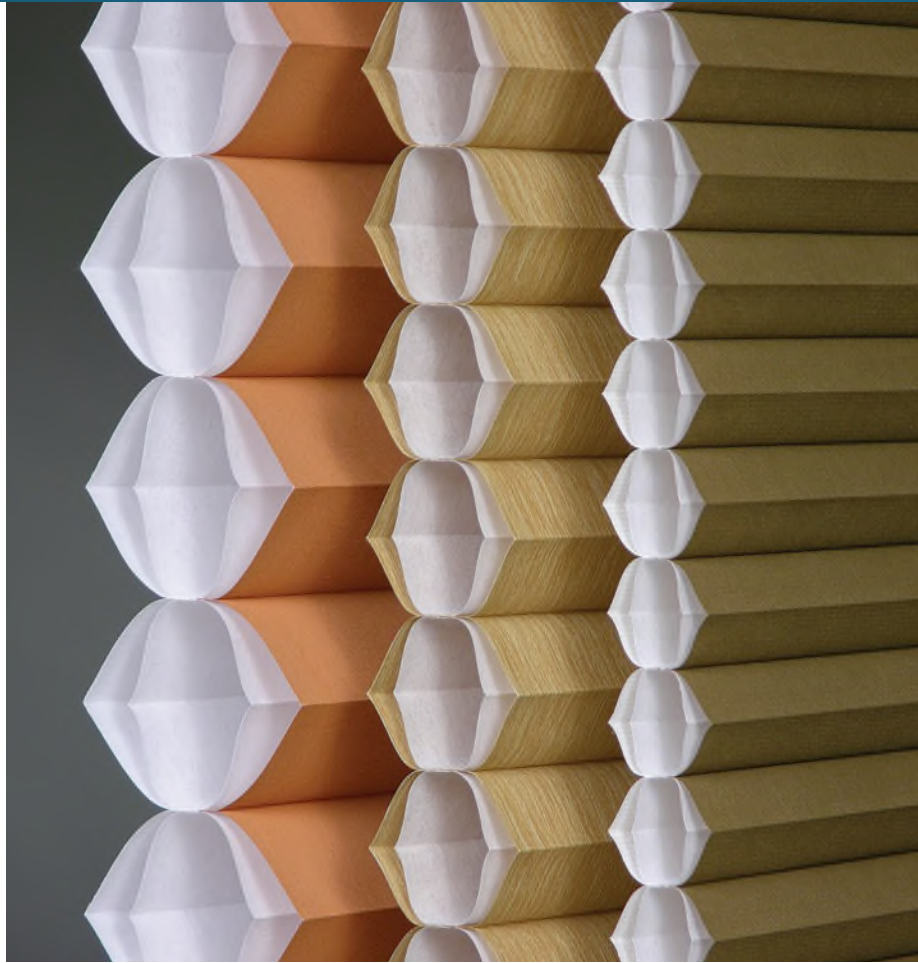
# Duette® Architella® Collection

## LIVE SMART. LIVE BEAUTIFULLY.

Exclusive to Hunter Douglas, the Duette® Architella® Collection is a revolutionary window covering that dramatically reduces heating and cooling costs, without compromising style.

### The Duette Architella Collection offers:

- Superior comfort — patented honeycomb-within-a-honeycomb construction provides superior energy savings.
- Vibrant color — color and texture are preserved in bright sunlight and on opaque fabrics.
- Consistent beauty — patented TruePleat™ construction keeps every shade crisp and consistent from front to back and top to bottom.
- Four luxurious fabrics —
  - Meritage™: richly woven with subtle color variations for added dimension.
  - Elan®: refined shimmering fabric presents an elegant appearance.
  - Panache™: timeless beauty of soft texture in a variety of colors.
  - Classic: fundamental appearance highlights the style of any décor.
- These exclusive benefits priced only 10% more than comparable single honeycomb Duette fabrics.



Now there are three Duette Architella pleat sizes — 1¼", ¾" and the new ⅜" to complement any room.



# HunterDouglas

\*For tax credit details and restrictions and a list of qualifying products, check out the Manufacturer's Certification Statement and FAQs at [hunterdouglas.com/taxcredit](http://hunterdouglas.com/taxcredit). Hunter Douglas is not a tax advisor. Consumers should consult a tax professional regarding their individual tax situation and ability to claim a tax credit related to the purchase of qualifying Duette honeycomb shades with Architella fabric.

# Duette® Architella® Collection

## SPECIFICATIONS

Please refer to the Hunter Douglas *Full-Line Reference Guide* for complete mounting requirements, finished dimensions, measuring instructions and ordering notes information.

## FABRICS

- Architella® Meritage™
  - Semi-Opaque
  - 3/4" pleat size
- Architella Elan®
  - Semi-Opaque and Opaque
  - 3/4" and 1 1/4" pleat sizes
- Architella Panache™
  - Semi-Opaque and Opaque
  - 3/4" and 1 1/4" pleat sizes
- Architella Classic
  - Semi-Opaque and Opaque
  - 3/8", 3/4" and 1 1/4" pleat sizes

## CLEANING OPTIONS

*The following procedures are general guidelines. Refer to the Hunter Douglas Full-Line Reference Guide for complete cleaning procedures and exclusions.*

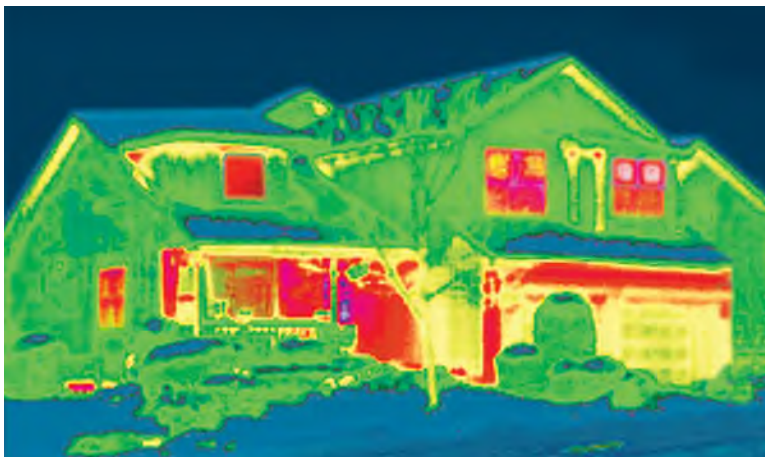
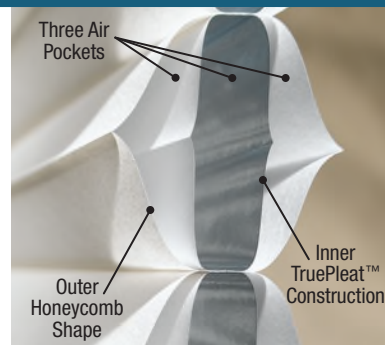
- Honeycomb fabrics are designed for minimal care and cleaning, and are anti-static and dust resistant.
- Dust with feather duster or low suction hand-held vacuum.
- Use compressed air or hair dryer (cool setting) to blow dust off shades.
- For most fabrics, spot-clean using a mild detergent solution; blot the fabric gently, do not rub.
- Some fabrics may utilize the bathtub/water immersion method. Do not immerse the headrail or fabric-covered valance.
- For deep cleaning and professional cleaning methods, call the Hunter Douglas Customer Information Center at 1-888-501-8364.

## LIFETIME GUARANTEE

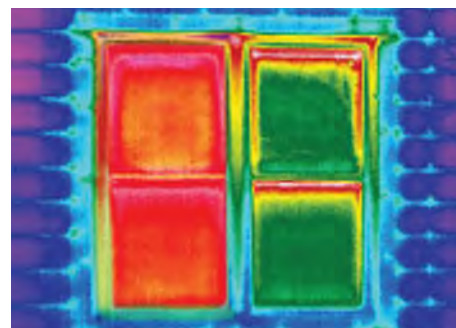
The Hunter Douglas Lifetime Guarantee is an expression of our desire to provide a thoroughly satisfying experience for your customers when selecting, purchasing and living with Hunter Douglas window fashion products. If customers are not completely satisfied, they may contact you or call Hunter Douglas at 1-888-501-8364.

## ENERGY EFFICIENCY

- The patented Architella honeycomb-within-a-honeycomb construction can reduce energy loss up to 50%.
- Duette® Architella honeycomb shades provide three insulating air pockets that deliver superior energy efficiency in every climate and every season.
- Architella shades dramatically reduce heating and cooling costs.



The thermal image shown above illustrates in red where a home loses the most energy.



Red shows energy loss through an uncovered window; green shows up to 50% reduced energy loss when an Architella shade covers the window.



**INNOVATIVE OPENINGS INC.**  
Window Covering and Shading Solutions

### 3 DENVER AREA SHOWROOMS:

Boulder      Louisville      Centennial  
1672 30th St.    667 S. Pierce Ave.    7255 S. Havana

**SHOP AT HOME SERVICE: 303.665.1305**

Castle Rock—Fort Collins • Summit County • Vail • Aspen

[www.innovativeopenings.com](http://www.innovativeopenings.com)