

# DURASOL SUNSTRUCTURE PINNACLE ONE & TWO



**Pinnacle One**

The *Pinnacle* is a versatile shading system that comes engineered with its own supporting frame, or can be used in conjunction with an existing pergola, glass roof structure or skylight.

The *Pinnacle* is available in two different styles. The *Pinnacle One* has the added engineering feature of a support structure allowing this awning to be mounted without the need for a pergola or roof below. The *Pinnacle Two* comes without front legs and needs to be mounted to an existing structure.

## SPECIAL FEATURES AND BENEFITS INCLUDE:

- Compact exterior motorized screen system
- Two different mounting brackets cover all applications
- Powder coated aluminum components are corrosion resistant
- Tension driven pulley system ensures taut fabric coverage
- Multiple unit options are available
- Cassette protects fabric against the elements when retracted utilizing self cleaning debris brush



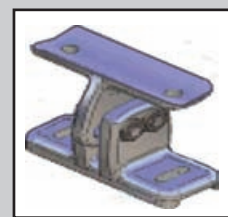
**Pinnacle Two**



**Pinnacle Two**



**Pinnacle One**



Foot for  
Horizontal Adjustment



Foot for  
Vertical Adjustment

**DURASOL**  
**AWNINGS**<sup>®</sup>

*Your Total Shading Solution*

888.DURASOL · www.durasol.com

225 Tower Drive · Middletown, NY 10941



**Unit Profile with Adjustable Side Bracket**



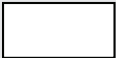

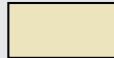

**Fabric Tensioning System**



**Adjustable Vertical Bracket**

## PRODUCT OVERVIEW \*

**Primary Application: Deck, Patio, Pergola, Skylight, Glass Roof, and Much More**

	<b>Pinnacle One (with legs)</b>	<b>Pinnacle Two (without legs)</b>
<b>Width Range</b>	3' - 16' (Two or three units can be coupled) (1/4" increments)	
<b>Projection Range</b>	13' (16' with acrylic)	
<b>Mounting</b>	Wall or Roof	Roof or on Top of Any Existing Structure
<b>Frame Finish</b>	Polyester Powder Coated	
<b>Roller Tube</b>	80mm, Galvanized Steel	
<b>Protective Hood:</b>	Semi-cassette	
<b>Operation</b>	Motorized	
<b>Fabric Options</b>	Open Weave Fabric With Multiple Densities and 400+ Acrylic Fabrics	
<b>Warranty</b>	<b>5 years</b> - Framework, Frame Finish, Motors and Electronics, <b>Fabric Warranty</b> - 10 Year Warranty on Most Fabrics (Some Exceptions Apply)	
<b>Frame Options</b>	<p style="text-align: center;"><b>Standard Frame Colors</b></p> <div style="display: flex; justify-content: space-around; align-items: center;"> <div style="text-align: center;">  White         </div> <div style="text-align: center;">  Brown         </div> <div style="text-align: center;">  Ivory         </div> <div style="text-align: center;">  Sand         </div> <div style="text-align: right; font-size: small;">           Colors are representative only         </div> </div>	

*\*Subject to change without prior notice*



**INNOVATIVE OPENINGS INC**  
Window Covering and Shading Solutions

**3 DENVER AREA SHOWROOMS:**

Boulder                      Louisville                      Centennial  
1672 30th St.    667 S. Pierce Ave.    7255 S. Havana

**SHOP AT HOME SERVICE: 303.665.1305**

Castle Rock-Fort Collins • Summit County • Vail • Aspen

[www.innovativeopenings.com](http://www.innovativeopenings.com)